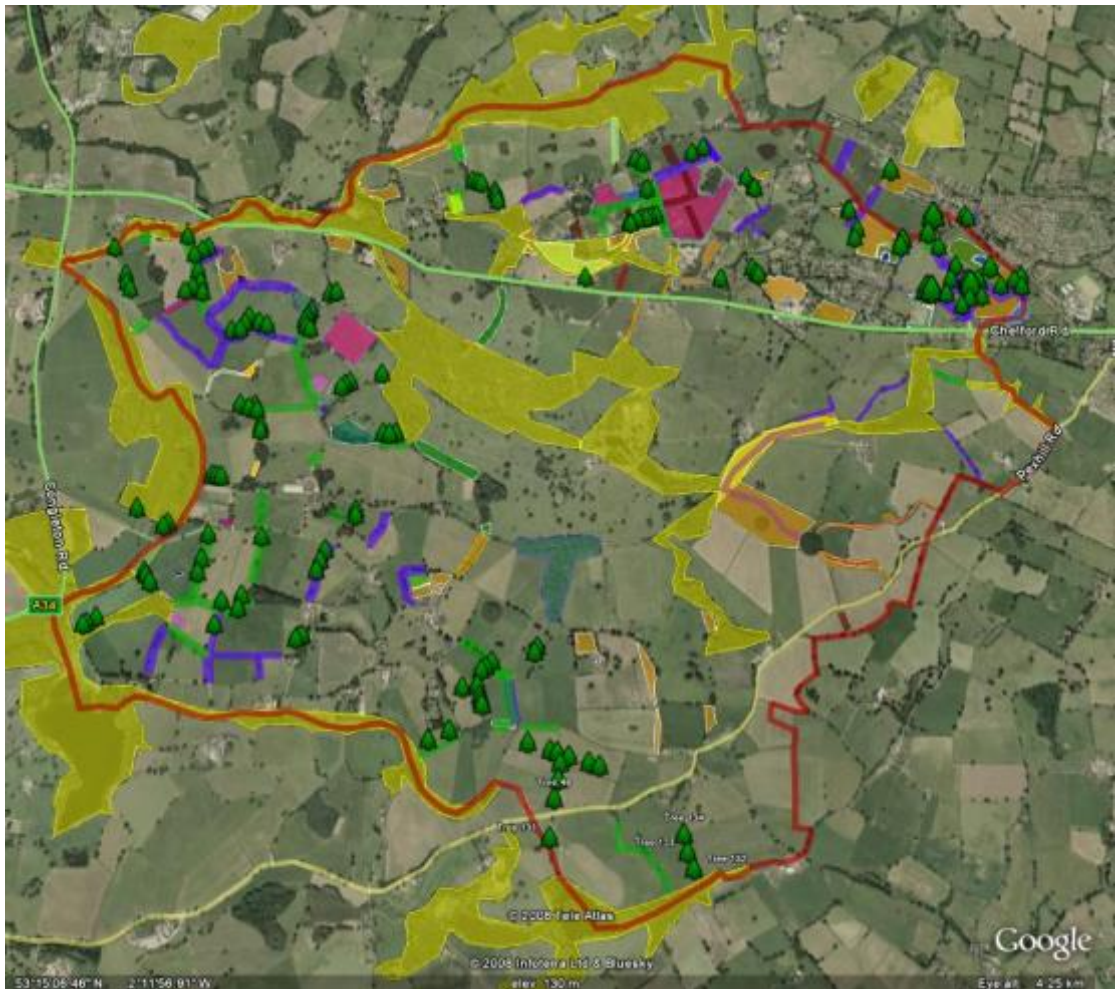


# HENBURY PARISH COUNCIL

## HENBURY PARISH ENVIRONMENTAL LANDSCAPE SURVEY SUPPLEMENT

2016



**COUNCILLOR DR SIMON BROWNE**

**TREE WARDEN**

NOVEMBER 2016

## **Henbury Parish Council: Environmental Project Update November 2016**

### **Summary**

Leading on from the Henbury Parish Council Environmental Survey Report published in 2009, the community project implementing the recommendations has gone from strength to strength, primarily funded by the Parish Council, and with the co-operation of numerous landowners. Essential to the success has been the active participation of volunteers within the local community, who have now planted 2.7km of new hedgerow and almost 2300 trees within the Parish.

### **Detail**

Of the 10km of hedgerow identified for restoration, we have now targeted almost a third. Tree planting along the hedgerows and in field locations has led to two new areas of woodland in addition to the improvement of the long-term outlook of the field boundaries.

Activities during the winters of 2013/14, 2014/15 and 2015/2016 have continued the earlier hedgerow work with new planting in seven different locations adding 760m of native hedging. This has been mostly reinstating old hedgerows and has been funded by the Parish Council with generous contributions from some of the landowners, especially Mr A Jackson of Old Parks Farm, the late Duncan Brock and the Capesthorpe Estate.

In late 2013 we were successful in our second application to the TCV (Trust for Conservation Volunteers) Big Tree Plant, and, in conjunction with the Capesthorpe Shoot, planted new woodland on Marlheath Farm over a weekend in March 2014. The trees and shelters were all supplied by the TCV and a team of 12 volunteers successfully planted all 1200 trees on grassland bordering existing woodland. Over time this will form an excellent broadleaf woodland offering landscaping and biodiversity enhancement.

A smaller tree-planting project involved a field-corner of fruiting trees, including five species of apple plus crab apple, hazel, blackthorn and hawthorn. This was on farmland adjacent to Henbury village and will provide valuable autumn/winter food for wildlife in years to come.

In winter 2016 an exciting opportunity arose to create a new orchard adjacent to Henbury Lodge on Marlheath Farm in the Capesthorpe Estate. Orchards have been much in decline across the country in recent years so this was an opportunity to help reverse the trend. Taking advantage of the last tree sale of the season at Chelford Market, we bought eighty apple trees of at least ten different varieties for £300, and planted these with the help of local volunteers and the Estate. We look forward to some community apple days in years to come!

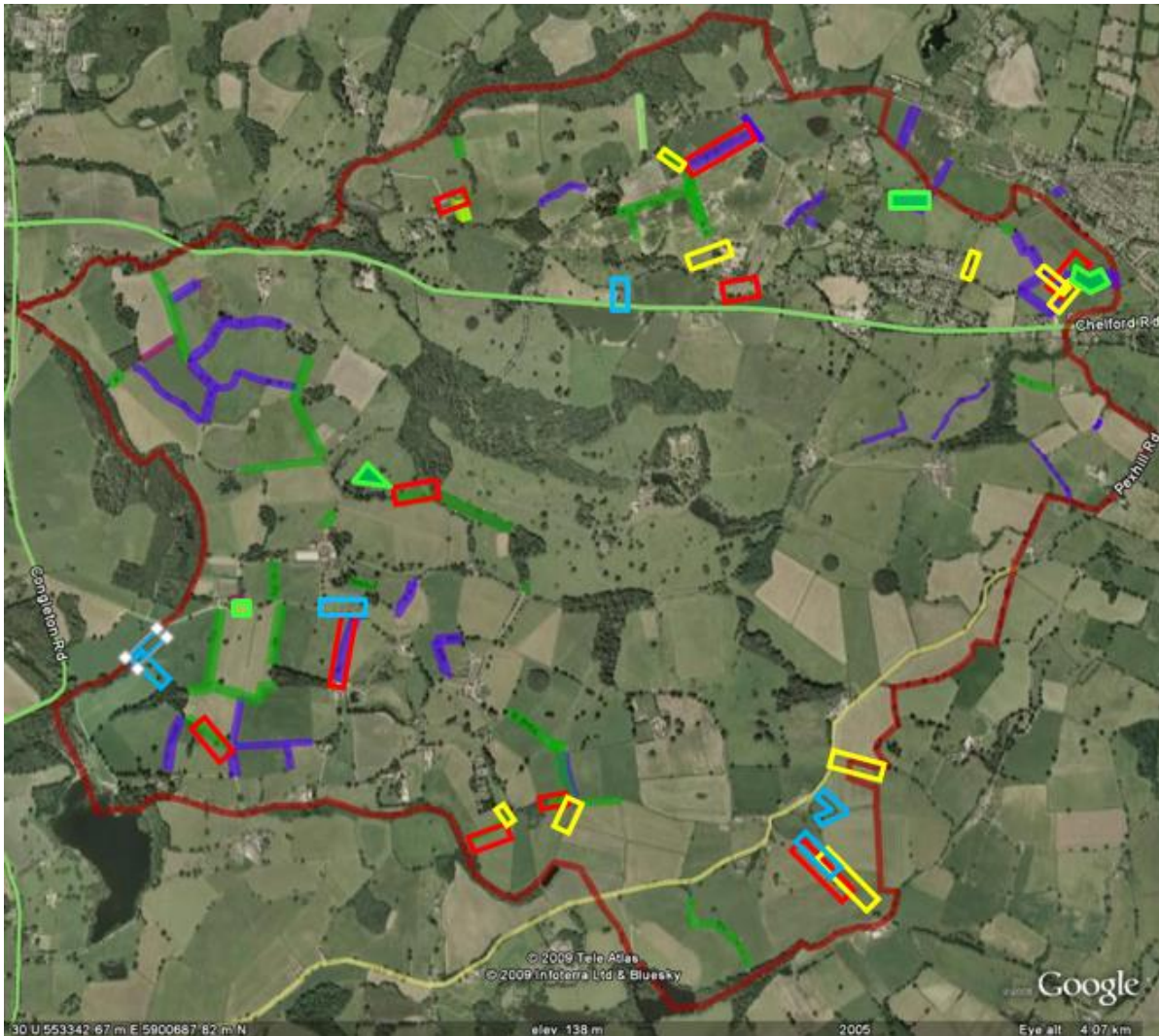
The location and details of the hedgerow planting so far are given in the table on the following page, together with a representation on an aerial view. Light blue rectangles highlight the new planting in 2014-2016, red are those planted in 2010-11, and yellow represents the 2012-13 work. The Marlheath Farm tree planting locations are shown as the green triangle and small square (the orchard) in the western edge of the Parish. A set of photographs then show the volunteers in action!

Although described in the previous update report, an area of Parish Council tree planting (500 trees) between Whirley Road and Chelford Road is potentially affected by the Cheshire East Local Plan, as part of site CS41. The initial proposal for the house building on this site states that the new woodland (which is flourishing) will be preserved, however we will obviously keep a very keen eye on the progression of this plan.

### **Conclusion**

The natural environment of Henbury Parish continues to improve with the financial support from Henbury Parish Council and local landowners, together with trees donated by the TCV. More than fifty volunteers have now been involved in the work, and an estimated 750 volunteer-hours given to produce the results achieved to date. The results of the earlier activities are becoming increasingly evident, with maturing hedgerows and trees across the Parish, and the project has led to a valuable awareness of

the area's landscape and natural habitats, which will help to ensure their protection for future generations.



Locations of the hedgerow and tree planting

| Year      | Location                  | Grid ref. | New planting (m) | Restored length (m) | Funded By       | Planted By      |
|-----------|---------------------------|-----------|------------------|---------------------|-----------------|-----------------|
| 2010-2013 |                           |           | 1955             | 2505                |                 |                 |
| 2014      | Rough Heys Farm           | SJ868737  | 40               | 50                  | HPC             | HPC             |
| 2014      | Lower Pexhill Farm        | SJ875717  | 170              | 200                 | HPC/D Brock     | HPC             |
| 2014      | Marlheath Farm            | SJ857725  | 140              | 140                 | HPC             | HPC             |
| 2014      | Church Lane, Henbury      | SJ883736  | 15               | 20                  | HPC             | HPC             |
| 2015      | Old Parks Farm, Dark Lane | SJ876715  | 125              | 130                 | HPC/A Jackson   | HPC             |
| 2015      | Marlheath Farm            | SJ857726  | 140              | 140                 | HPC/Capesthorne | HPC/Capesthorne |
| 2016      | Marlheath Farm            | SJ850725  | 135              | 135                 | HPC/Capesthorne | HPC/Capesthorne |
| 2010-2016 | Totals                    |           | 2720             | 3320                |                 |                 |

Hedgerow planting summary





Photographs of the work in 2014-2016

Simon Browne, Nov 2016