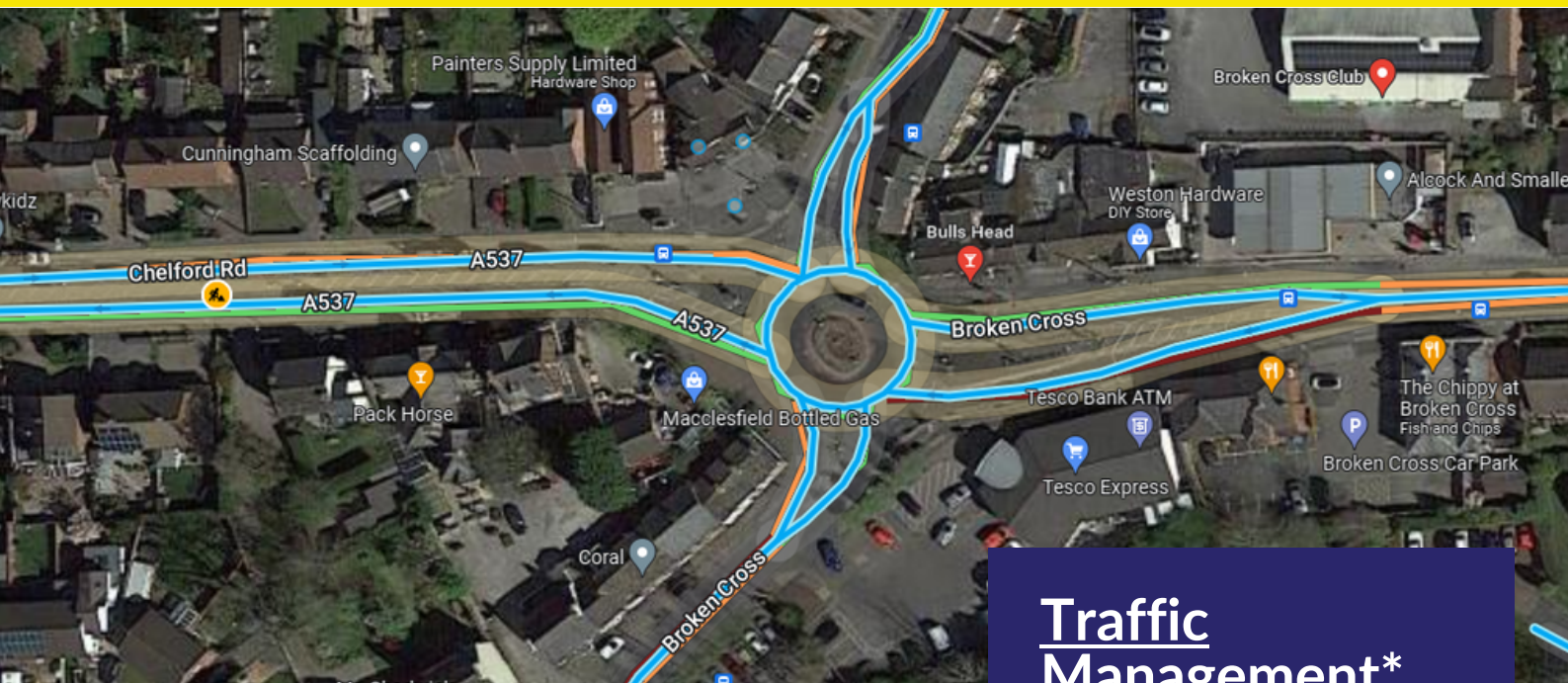


Broken Cross Junction Upgrade Works

03/01/23 – 11/01/23



Progress Update

Works include:

- Kerb line alterations
- Signage installation
- Street Lighting installation

Important Notice:

Between 12th Jan – 24th Jan 2023 there will be HV Electrical works being undertaken by a third-party contractor.

This will be on both Chelford Road and the Broken Cross Junction.

Traffic Management*

***Not in place from 4pm.**

Traffic Management is monitored daily by:



Traffic Management operatives

4-Way Traffic Signals are active on the main road between:



07:00 and 16:00*

*with timings altered during rush hour.
*Local road closure remains in place 24

Traffic signals are switched off at:



16:00

with the junction returning to a roundabout.

Works on behalf of:



Works on behalf of:

Bellway

energetics
Design | Build | Connect

Broken Cross – HV installation /connection works for Bellway Homes development – Chelford Road

Works Duration - 12/01/23 – 24/01/23



12/01/23 to 13/01/23 - Temporary 2-way traffic lights on Chelford Road at Bellway homes development entrance **in situ 24/7**

14/01/23 to 16/01/23 – Temporary 4-way traffic lights on Broken Cross junction **in situ 24/7**

17/01/23 to 19/01/23 - Temporary 2-way traffic lights on Chelford Road in the area of number 93 **in situ 24/7**

20/01/23 only – Temporary 4-way traffic lights on Broken Cross junction **7am till 4pm** removed with the junction returning to roundabout

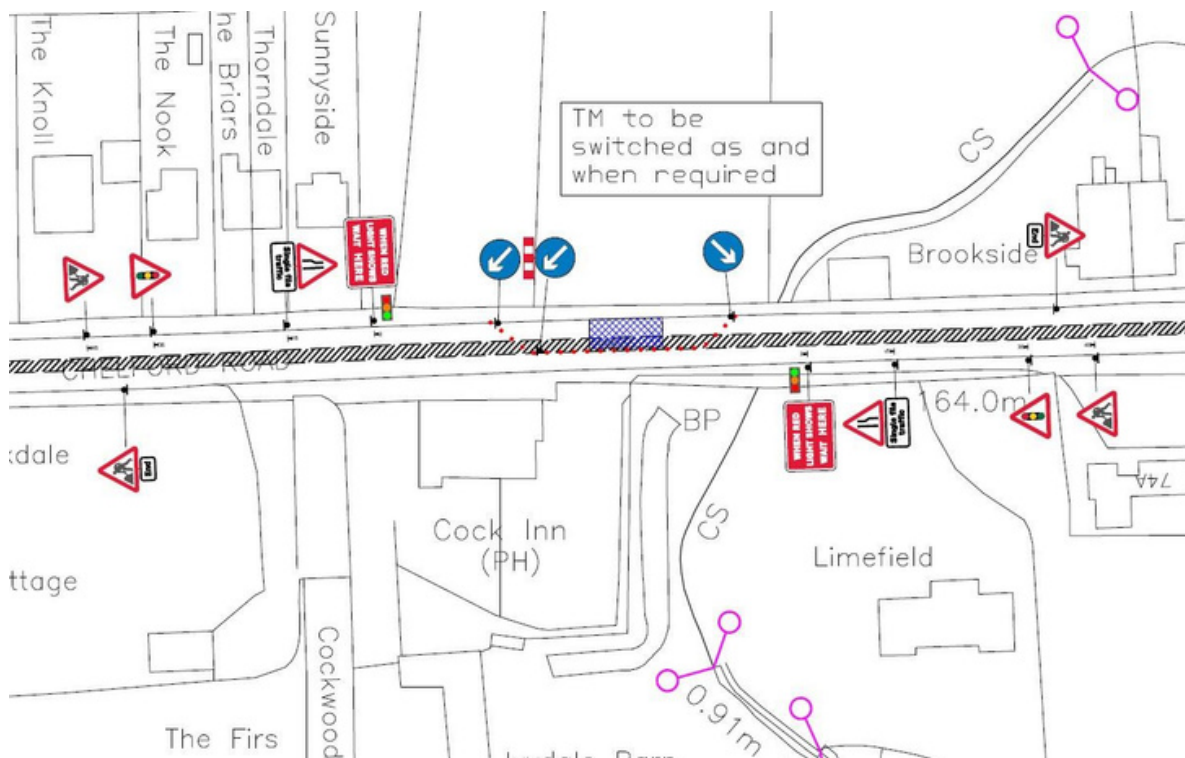
21/01/23 to 22/01/23 – No temporary traffic management, reverts to roundabout arrangement

23/01/23 to 24/01/23 – Temporary 4-way traffic lights on Broken Cross junction **7am till 4pm** removed with the junction returning to roundabout –

24/01/23 – 4PM all works fully complete

Temporary 2-way traffic lights on Chelford Road at Bellway homes development entrance

- 2 way lights at site entrance of Bellway homes development to extend ducts into site boundary

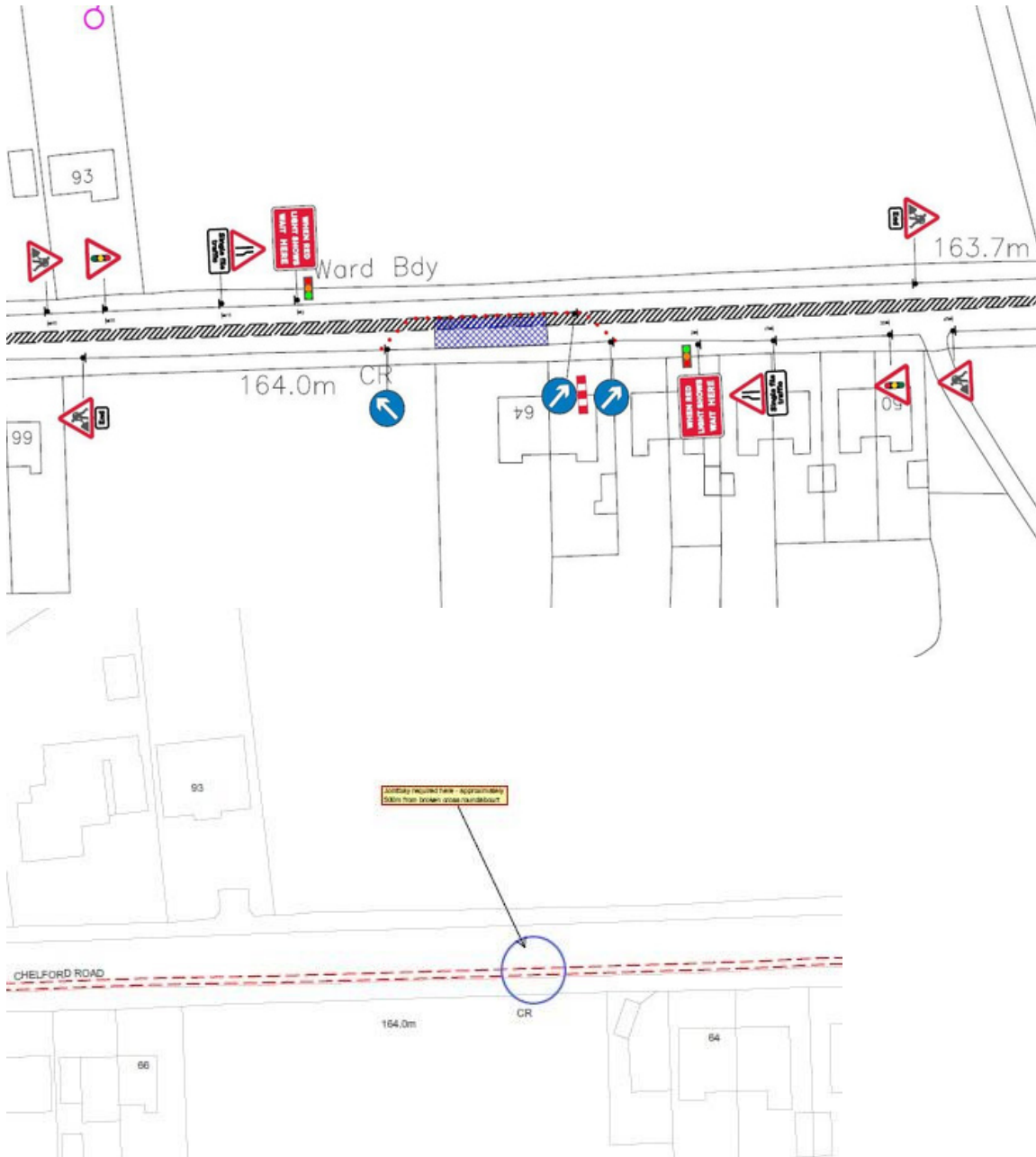


Works on behalf of:

Bellway

energetics
Design | Build | Connect

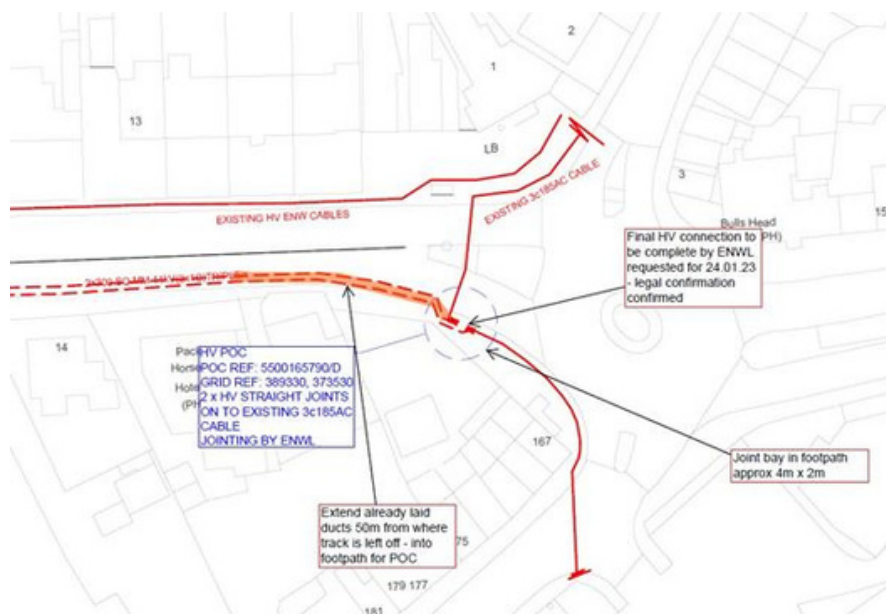
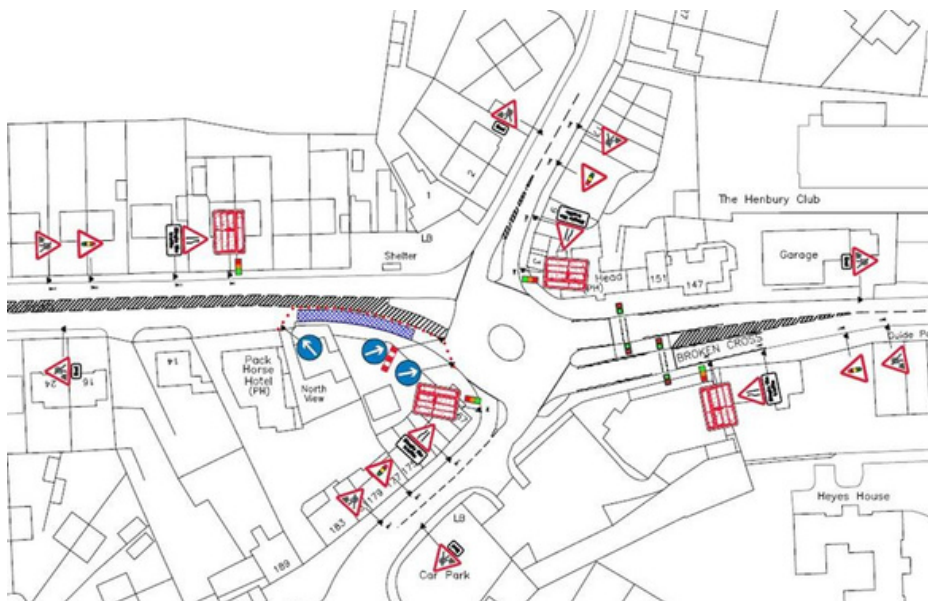
- 2 way lights at 93 Chelford road –



- Excavation and installation of High voltage cables outside 93 Chelford road including HV jointing

Temporary 4-way traffic lights on Broken Cross junction

- 4 way traffic lights – at broken cross roundabout
- To be installed on the 14/01/23 for 3 days for the extension of ducts into footpath + excavation of electric connection point.
- Reinstalled on the 20/01/23 to allow for high voltage connection– removed at 4pm
- Reinstalled on the 23/01/23 to complete backfill and reinstatement of footpath – removed daily at 4pm



Works on behalf of:



~~PLEASE NOTE ELECTRICITY SUPPLIES TO PROPERTIES OR BUSINESSES WILL NOT BE EFFECTED DURING THESE WORKS~~

Any issues during the duration of these works please contact via the details below –

Operational issues –

Please contact – Darren Edge – Energetics Project Manager – during office hours

Energetics – design and build

[206 Cavendish Place, Warrington WA3 6WU](#) ·
[0330 058 7400](#)

Traffic Mmanagement

Please contact - [03330 051681](#) info@premier-traffic.co.uk

Out of hours – Please contact – Last mile Call Centre on 08450537140

Broken Cross Junction Upgrade Works

25/01/23 – 26/01/23



Progress Update

Works include:

- Surfacing works to development carriageway and footway

Please note:

- 2-Way traffic lights on Chelford Road (Opposite Cock Inn) will be removed during the evening

Traffic Management*

***Not in place from 4pm.**

Traffic Management is monitored daily by:



Traffic Management operatives

2-Way Traffic Signals are active between:



07:00 and 16:00*

*with timings altered during rush hour.

Traffic signals are switched off at:



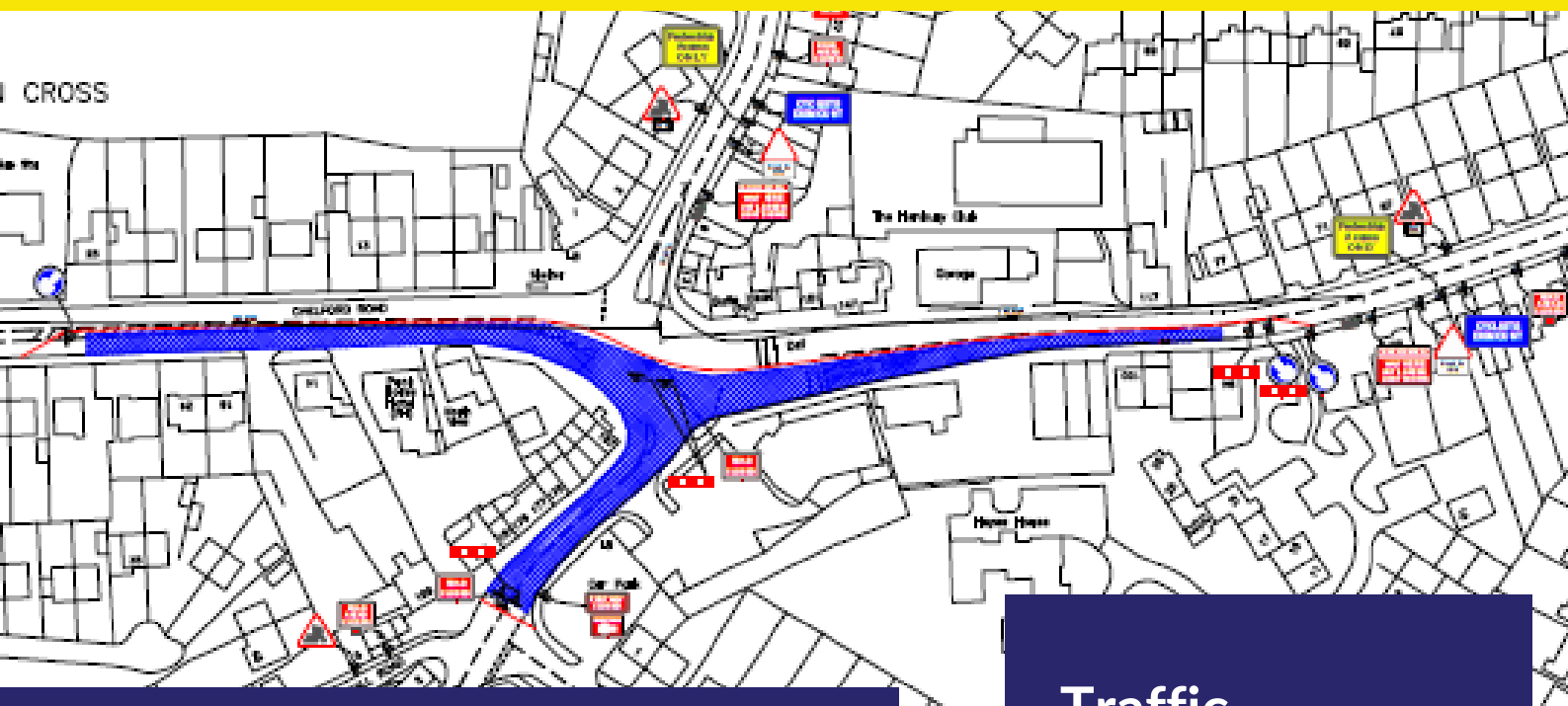
16:00

Works on behalf of:

Bellway

Broken Cross Junction Upgrade Works

27/01/23 - 08/02/23 - Phase 8a



Progress Update

Works include:

- Carriageway and Footway Resurfacing
- Traffic Signal loop installation
- Road Marking installation

Please note:

- There will be 3-Way lights on Broken Cross, Chelford Road and Fallibroome Road.
- Road Closure of Gawsworth Road from the Broken Cross junction up to but not including Princes Way. (Diversion will be in place)
- Signed Diversion will be in place

Any access issues to both residents and businesses please call our office number and we will be in touch to discuss and facilitate - 0151 559 0860

Traffic Management

Traffic Management is monitored daily by:



Traffic Management operatives



Temporary traffic signals will remain on for 24hrs on the main road for the duration of the phase. Local road closures will be in place 24hr



Diversion via Pexhill Road, A34 and Chelford Road

Works on behalf of:



Broken Cross Junction Upgrade Works



09/02/23 - 21/02/23 - Phase 8b



Progress Update

Works include:

- Carriageway and Footway Resurfacing
- Traffic Signal loop installation
- Road Marking installation

Please note:

- There will be 3-Way lights on Broken Cross, Chelford Road and Gawsworth Road
- Fallibroome Road Closure will be in place from Broken Cross Junction up to No. 29 Fallibroome Road.
- Signed Diversion will be in place

Any access issues to both residents and businesses please call our office number and we will be in touch to discuss and facilitate - 0151 559 0860

Traffic Management

Traffic Management is monitored daily by:



Traffic Management operatives



Temporary traffic signals will remain on for 24hrs on the main road for the duration of the phase. Local road closures will be in place 24hr



Diversion via A537, Prestbury Road and Priory Lane

Works on behalf of:

Bellway