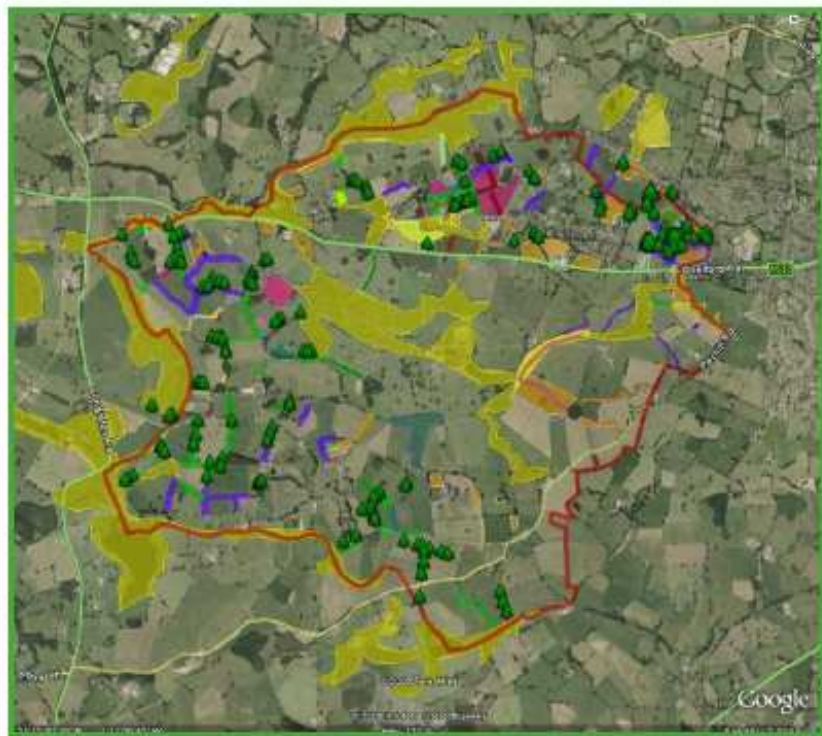


HENBURY PARISH COUNCIL
HENBURY PARISH
ENVIRONMENTAL LANDSCAPE SURVEY
SUPPLEMENT
2011



COUNCILLOR DR SIMON BROWNE

TREE WARDEN
JUNE 2011

Henbury Parish Council: Environmental Project Update May 2011

Summary

Further to the publication of the Environmental Survey Report in 2009, the Henbury Parish Environmental Project has been active in implementing a number of the recommendations provided. The work has largely been performed by the local parish community and near neighbours, and funded by Henbury Parish Council and the Cheshire region Biodiversity Partnership (CrBP). The project has focused on hedgerow and tree planting across the Parish, primarily at locations targeted within the survey report, and using volunteer labour to maximise the amount of work possible. Cheshire Landscape Trust has provided over four hundred trees to support the project, BTCV have provided one hundred and a number of additional 'home-grown' saplings have been provided by parish members.

Detail

An initial twenty five copies of the report were printed and distributed to the main landowners across the Parish together with key stakeholders. A positive response was received, with support being given to implementing the strategy across the area.

Almost 10km of hedgerow has been identified for restoration, from new planting to small-scale gapping up and laying. Tree planting schemes have been defined, involving group planting together with the improvement of the hedgerow tree population. Several valuable grassland areas (unimproved) have been identified for protection and further development of wildflower areas will be a target for the project.

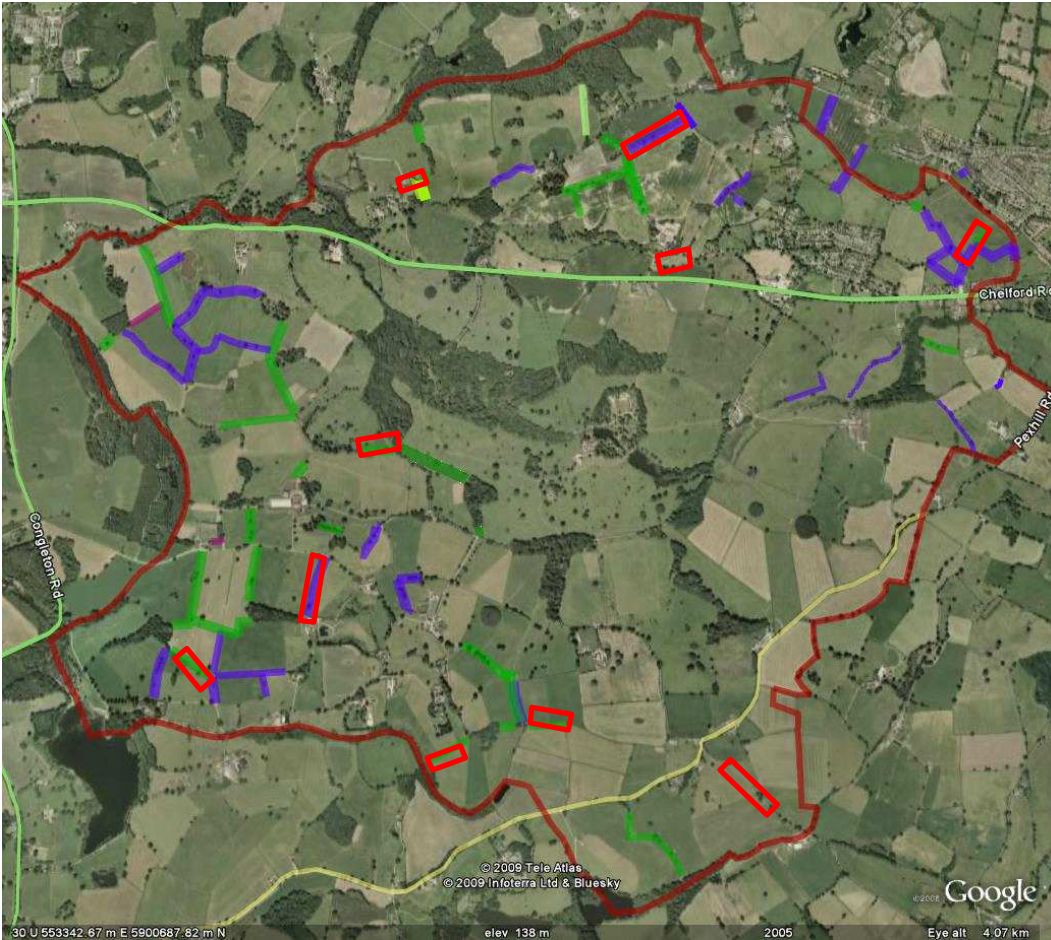
In the winter of 2009/2010 practical work commenced, supported by £1000 funding from the Parish Council and trees from Cheshire Landscape Trust. In total, 240m of new hedgerow was planted in three sections and 250 trees in diverse locations across the Parish using volunteer labour. In winter 2010/2011, 930m of new hedgerow planting was undertaken together with the planting of a further 300 trees (200 from CLT and 100 from BTCV), funded by £1000 from Henbury Parish Council and £800 from CrBP. In addition, a generous donation was received from Col. Sparrow of Wall House towards the project and 115m of the new hedgerow was planted as part of a scheme funded by Stella Artois via The Tree Council and BASC through support from Ben Gregory of the BASC Green Shoots project.

The work undertaken for the Henbury Parish Plan in 2010 identified that the Parish community was very receptive to the project, with 96% of the 75% responding indicating support. Further funding from the Parish Council is therefore envisaged to facilitate additional plan implementation in the longer term and to supplement funding obtained from external sources.

The location and details of the hedgerow planting to date are given in the table below, followed by a representation on an aerial view (red rectangles being the new planting).

Year	Location	Grid ref.	New planting (m)	Restored hedge length (m)	Funded By	Planted By
2010	Longmoss	SJ887738	60	60	HPC	HPC
2010	Marlheath Farm	SJ861730	90	90	HPC	HPC
2010	Springbank Farm	SJ866717	90	90	HPC	HPC
2011	Longmoss	SJ886737	45	80	HPC	HPC
2011	Springbank Farm	SJ863717	180	180	HPC	HPC
2011	Marlheath Farm	SJ857724	230	260	HPC	HPC
2011	Marlheath Farm	SJ853722	115	115	Tree Council via BASC, Capesthorne Estate	BASC & subcontractors
2011	Trevors Close Farm	SJ876716	200	260	HPC	HPC
2011	Wall House	SJ863743	50	50	HPC	HPC
2011	Rough Heys Farm	SJ874744	80	300	HPC	HPC
2011	Dark Lane (Rough Heys)	SJ874737	30	160	HPC	HPC
Total			1170	1645		

Hedgerow planting summary



Location of hedgerow planting 2010/2011

Tree planting has primarily taken place in field corners, along existing hedgerows and in the new hedgerows planted. This will help to reverse the decline in hedgerow tree population across the parish.

The following photographs show the planting being undertaken and some of the results obtained.





Outlook

The project has so far been a great success, thanks particularly to the support from Henbury Parish Council, Cheshire region Biodiversity Partnership and Cheshire Landscape Trust. The progress made is a reflection of the amount of hard work put in by a large number of volunteers - over twenty five - who have been out in all weathers helping to turn the plan into reality. The willingness of the landowners to accommodate the hedgerows and trees has been very encouraging and, where stock will be present, they have put in new fencing as protection.

Although in its early stages, the project is demonstrating that with local effort and a modest level of funding it really is possible to make a positive impact on a relatively wide area, by implementing a living landscape strategy at a parish level. This is hopefully something that can be more widely adopted across other parishes as a means of improving Cheshire's biodiversity and landscape.

Simon Browne. May 2011.